

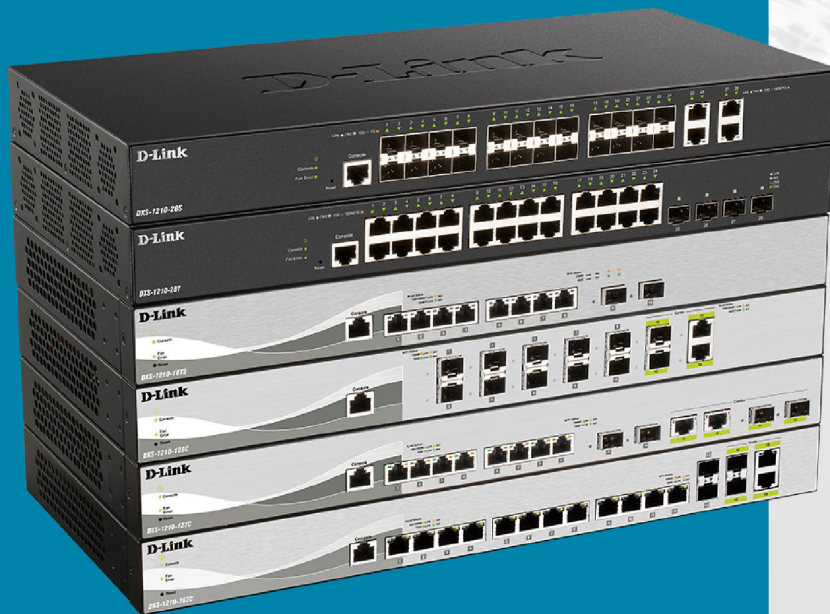
## At a Glance

### D-Link DXS-1210 Series

# 10 Gigabit Ethernet Smart Managed Switch

The D-Link DXS-1210 Series 10 Gigabit Ethernet Smart Managed Switches are a cost-effective 10 Gigabit switch series capable of servicing a range of network needs in any business environment. With high performance and low latency, this pair of 10G smart managed switches fulfill the needs for virtualization, cloud services, and server-to-server applications.

Supporting a combination of 10GBASE-T and SFP ports, the DXS-1210 Series provides connection flexibility across a network, allowing easier network integration. The DXS-1210-28T is equipped with 4 x 10/25G SFP28 ports, enabling this series to serve as either an aggregation / access switch in larger Enterprise environments or alternatively be employed at the center of a Small-to-Medium-Business (SMB) network.



#### DXS-1210 Series

DXS-1210-10TS

DXS-1210-12TC

DXS-1210-12SC

DXS-1210-16TC

DXS-1210-28T

DXS-1210-28S

#### Type

Smart Managed

#### Scenarios

- Enterprise Aggregation/Core

#### Security Features

- Access Control List
- IP-MAC-Port Binding
- Clientless MAC/Web Access Control
- D-Link Safeguard Engine
- Port Security
- APR Spoofing Prevention

#### Intuitive Management

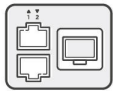
- D-Link Network Assistant utility or Web-based GUI
- Built-in SNMP MIB for remote NMS (D-View 7)
- Full CLI through console and Telnet

#### Advanced Features

- Auto Surveillance VLAN
- Auto Voice VLAN
- Loopback Detection
- Cable Diagnostics
- Static Route
- LLDP/LLDP-MED

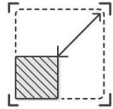
#### Green Technology

- Power saving via the following features:
  - Link Status Detection
  - LED Shut Off
  - Port Shut Off
  - System Hibernation



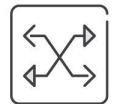
## 01. Flexibility

Add 10-Gigabit Ethernet connectivity with the DXS-1210 series, which offers a variety of 10G port combinations including 10GBASE-T and SFP ports to provide connection flexibility across a network for simplified network integration.



## 02. Expandability

The DXS-1210-28T model features 24 10GBASE-T and four SFP28 fiber ports (10G/25G) to provide great scalability and highly efficient network with expandable capacity.



## 03. Availability

Efficient multicast group management with IGMP snooping and authentication allows optimized bandwidth utilization and improved security, 802.1w Rapid Spanning Tree (RSTP) and G.8032 ERPS allows fast network convergence and resiliency. 802.3ad link aggregation allows grouping of multiple ports to provide redundancy and load balancing in mission-critical environments.



## 04. Security

Latest security features include packet content access control lists (ACL), storm control, and smart IP-Mac-port binding (Smart IMPB) with DHCP snooping. Smart IMPB allows IT admins to bind a source IP address with an associated MAC address and define the port number to enhance user access control.

DHCP snooping helps prevent unauthorized DHCP servers from offering IP addresses to DHCP clients. Moreover, Address Resolution Protocol (ARP) spoofing prevention protects the network from attacks that may allow an intruder to sniff data frames, modify traffic, or bring traffic to a halt altogether by sending fake ARP messages.



## 05. Manageability

With the D-Link Network Assistant (DNA) utility, simultaneous configuration and setup of all discovered devices, including password changes and firmware upgrades are simplified. The DXS-1210 Series also supports a comprehensive 10 language multi-lingual web UI, a full command line interface (CLI) through Telnet, a console port, as well as D-View 7; a network management system (NMS) that allows central management of critical network characteristics such as availability, reliability, resilience, and security.

# Seamless Migration from Aggregation to Core

Future-Ready Scalability for Your Growing Business

10 Gigabit Ethernet Smart Managed Switches | DXS-1210-28T/28S



## DGS-1210 Series Port Combinations



Model Number	DXS-1210-10TS	DXS-1210-12TC	DXS-1210-12SC
Interface	<ul style="list-style-type: none"> <li>• 8-Port 10G BASE-T +</li> <li>• 2-Port SFP+</li> </ul>	<ul style="list-style-type: none"> <li>• 8-Port 10G BASE-T +</li> <li>• 2-Port SFP+ +</li> <li>• 2-Port 10G BASE-T/SFP+ + Combo Ports</li> </ul>	<ul style="list-style-type: none"> <li>• 10-Port SFP+ +</li> <li>• 2-Port 10G BASE-T/SFP + Combo Ports</li> </ul>



Model Number	DXS-1210-16TC	DXS-1210-28T	DXS-1210-28S
Interface	<ul style="list-style-type: none"> <li>• 12-Port 10G BASE-T +</li> <li>• 2-Port SFP+ +</li> <li>• 2-Port 10G BASE-T/SFP+ + Combo Ports</li> </ul>	<ul style="list-style-type: none"> <li>• 24-Port 10G BASE-T +</li> <li>• 4-Port 10/25G SFP28</li> </ul>	<ul style="list-style-type: none"> <li>• 24-Port SFP+ +</li> <li>• 4-Port 10G BASE-T</li> </ul>

## Warranty

For information about D-Link warranties, visit [support.dlink.com](http://support.dlink.com)

### Technical Support

For information about D-Link Technical Support, visit [support.dlink.com](http://support.dlink.com)

### Product Availability

Shipping worldwide.

### More Information

For more information about the DGS-2000 Series, visit [www.dlink.com](http://www.dlink.com)